



**Automatic Satellite System**  
with built-in DVB for positive satellite identification

**Model 9704**  
**Model 9704-LP**

**Installation and Operating Instructions**



*Digital TV Solutions for Mobile Markets*

11200 Hampshire Avenue South, Bloomington, MN 55438-2453  
Phone: (952) 922-6889 Fax: (952) 922-8424

[www.kingcontrols.com](http://www.kingcontrols.com)



## IMPORTANT!

The satellite TV market is expanding and changing. The information in this manual was accurate at the time of printing. If your King-Dome does not operate as outlined in this manual please call King Controls at (952) 922-6889 or visit our website at [www.kingcontrols.com](http://www.kingcontrols.com).

This King-Dome is factory pre-set for DIRECTV® standard digital programming broadcast from the 101° W satellite. If you also receive your local channels from DIRECTV's 119 satellite or if you subscribe to Dish Network® or Bell TV programming, you must re-configure the antenna to work with your satellite service. Doing this will allow the King-Dome to lock on the correct satellites to receive your programming and also enable automatic satellite switching via the receiver's remote control for multi-satellite service.

Antenna configuration is a one time procedure that **MUST BE COMPLETED** before using your King-Dome antenna. Configuration may be done with the supplied wall mount controller or the #1844 Keypad (dealer tool). See the antenna configuration section in this manual for specific instructions.

The King-Dome can receive available HDTV programming from DIRECTV Ku band satellites at 101° and 119°. It will not receive channels broadcast from DIRECTV's Ka band satellites at 99° and 103°.

**Please read this entire manual before beginning the installation.**

Note: The following upgrade kit is available for this unit:

Upgrade Kit #9743: Adds in-motion tracking capability.

For more information, call the King Controls Sales Department at (952) 922-6889.

## TABLE OF CONTENTS

Section	Contents	Page
1.	INTRODUCTION.....	2
2.	DEFINITION OF TERMS.....	3
3.	INSTALLATION.....	4-12
4.	ANTENNA CONFIGURATION.....	13-29
5.	OPERATION.....	30-33
6.	TROUBLESHOOTING.....	34
7.	MAINTENANCE.....	35
8.	LIMITED WARRANTY.....	36

DIRECTV® is a registered trademark of DIRECTV, Inc.

Dish Network® is an official trademark of Echostar Communications Corporation.

Bell TV is an official trademark of Bell Canada.

DVB® is a trademark of the DVB Digital Video Broadcast Project (1991-1996).

HDMI™ is a trademark of HDMI Licensing LLC.

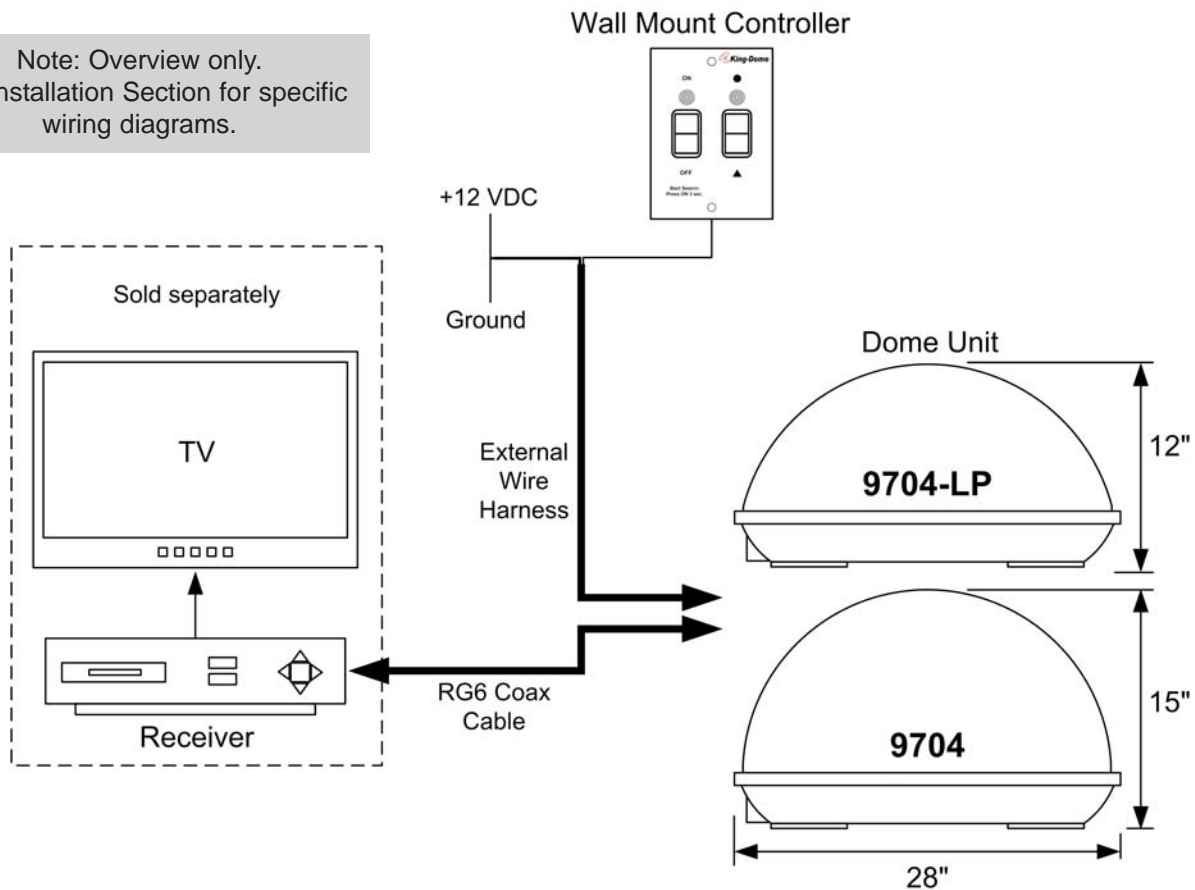
The King-Dome Automatic Satellite System includes 2 main components (**Fig. 1**).

Dome (Antenna) Unit	Located on the roof of the vehicle. The antenna is covered by a protective dome that keeps operational components free from the elements.
Controller	Located in the vehicle. Activates the search mode and provides limited diagnostic functions using the status light.

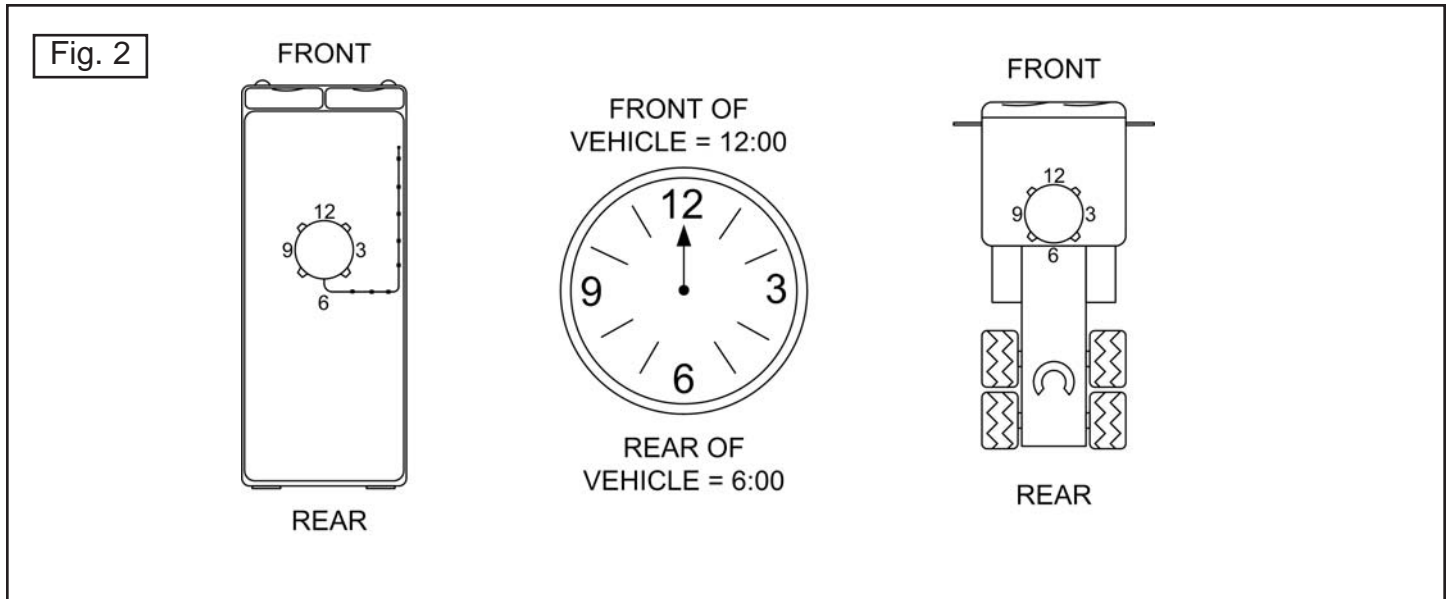
Note: A TV, satellite receiver, and program subscription are also required for satellite TV viewing (sold separately).

**Fig. 1**

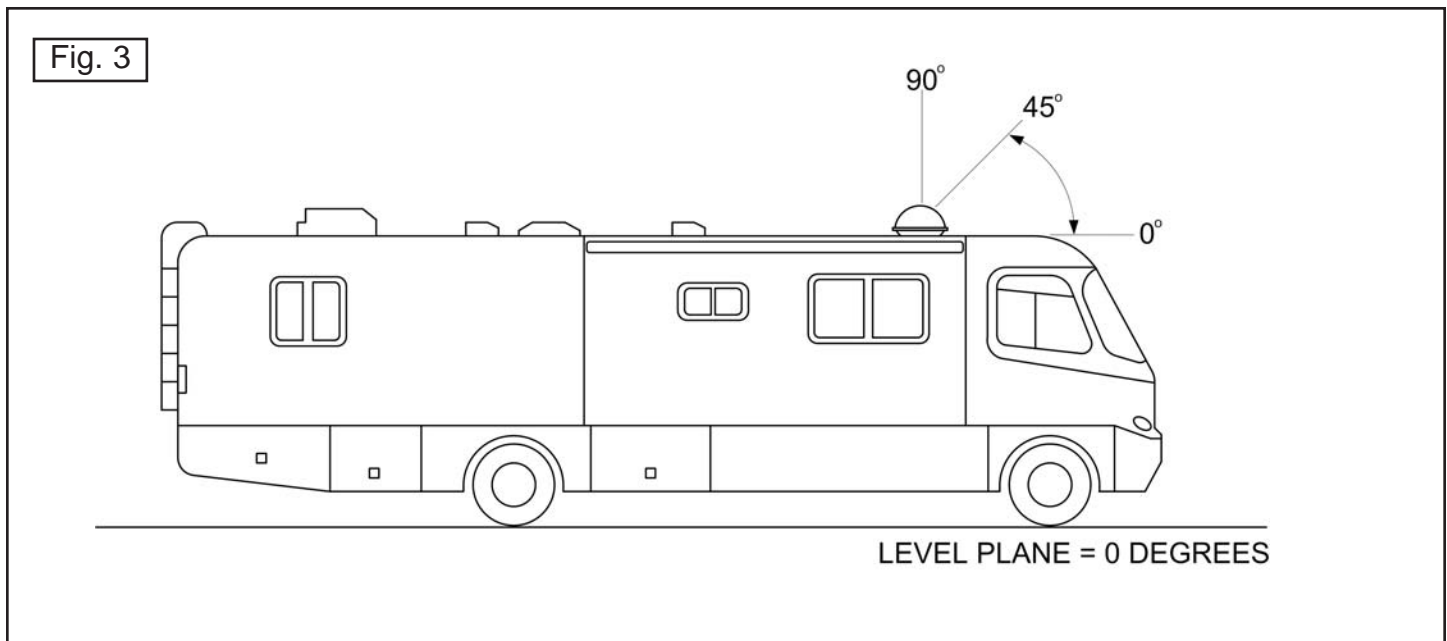
Note: Overview only.  
See Installation Section for specific wiring diagrams.



**AZIMUTH:** Circular rotation around the vehicle. Using a clock as reference, the front of the vehicle is 12:00, and the rear is 6:00 (**Fig. 2**).



**ELEVATION:** Angle in degrees measured from a level plane (**Fig. 3**).



**SIGNAL STRENGTH:** Intensity of electronic signal received from the satellite transmission.

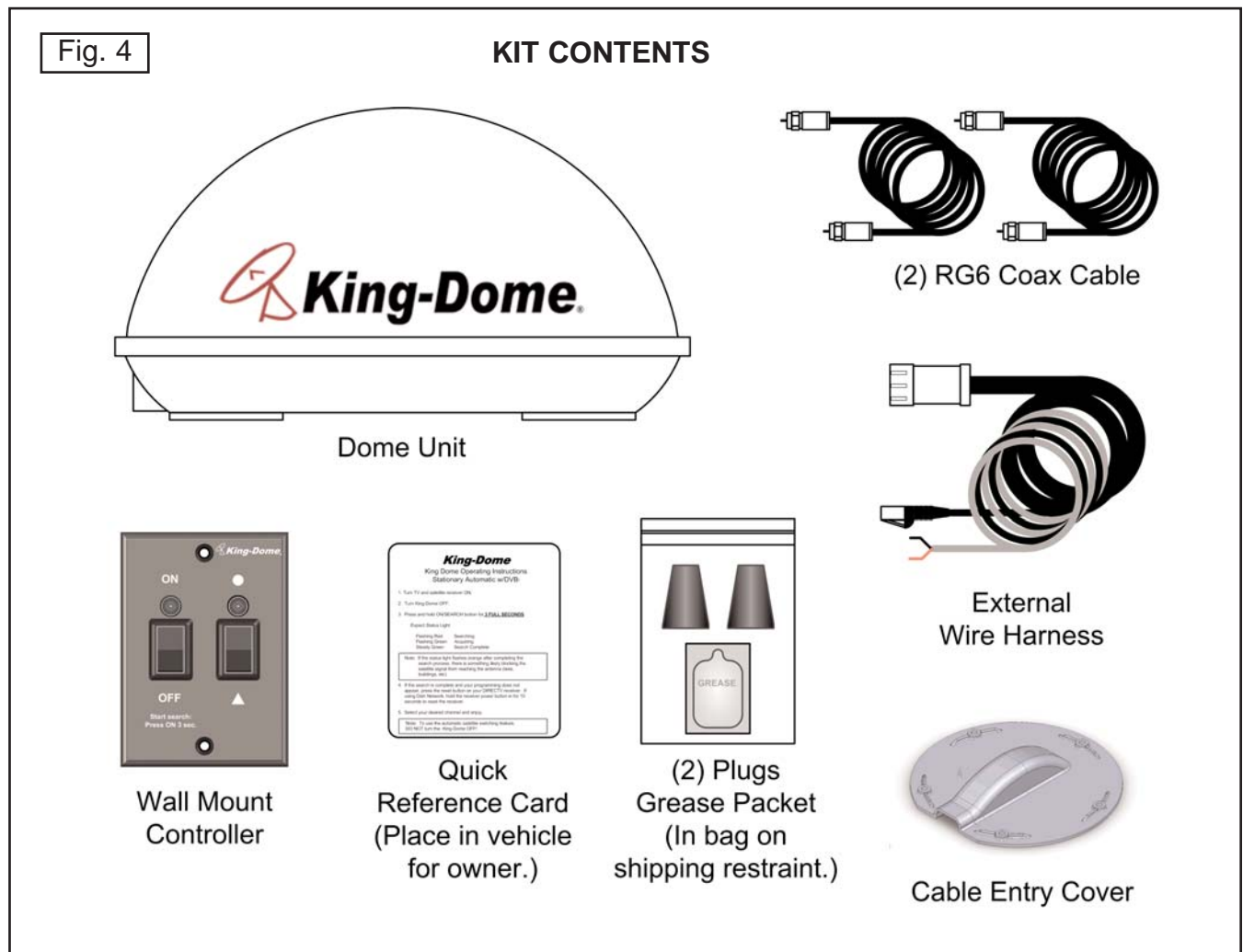
## TOOLS AND MATERIALS REQUIRED

- drill and drill bit set
- tape measure
- 7/16" open end wrench (coax connections)
- adhesive sealant (compatible with roof material)
- appropriate fasteners to install all components and wiring
- 5/32" allen wrench, channel lock or pliers (to remove shipping bolts)
- wire cutter (to remove shipping tie strap)
- Optional: #1844 King Controls Keypad



## KIT CONTENTS

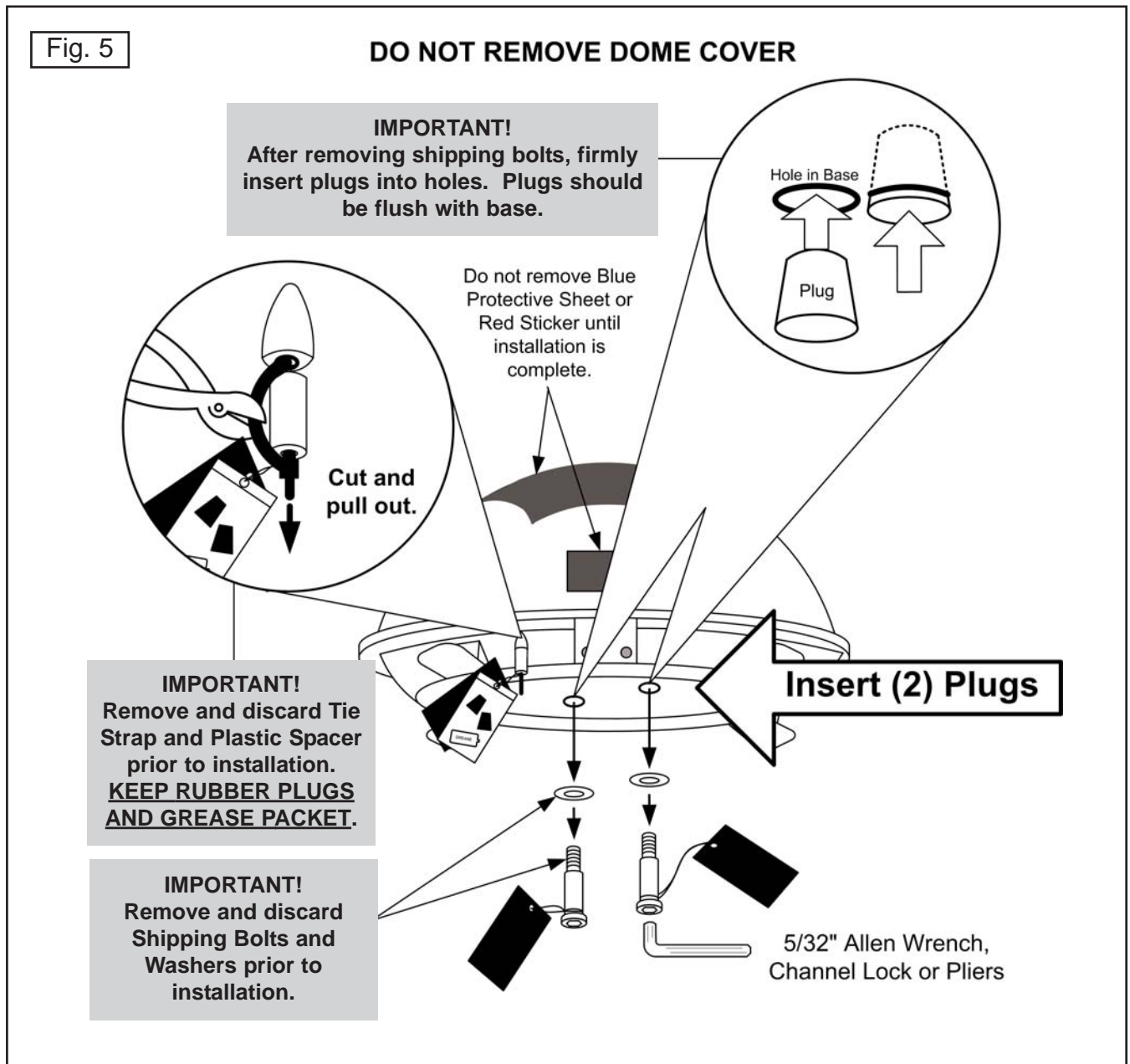
1. Unpack and identify all components (**Fig. 4**).



**IMPORTANT!** The tie strap and spacer, and the shipping bolts and washers must be removed from the bottom of the dome unit prior to installation. **DO NOT REMOVE THE DOME COVER TO REMOVE THESE SHIPPING RESTRAINTS.**

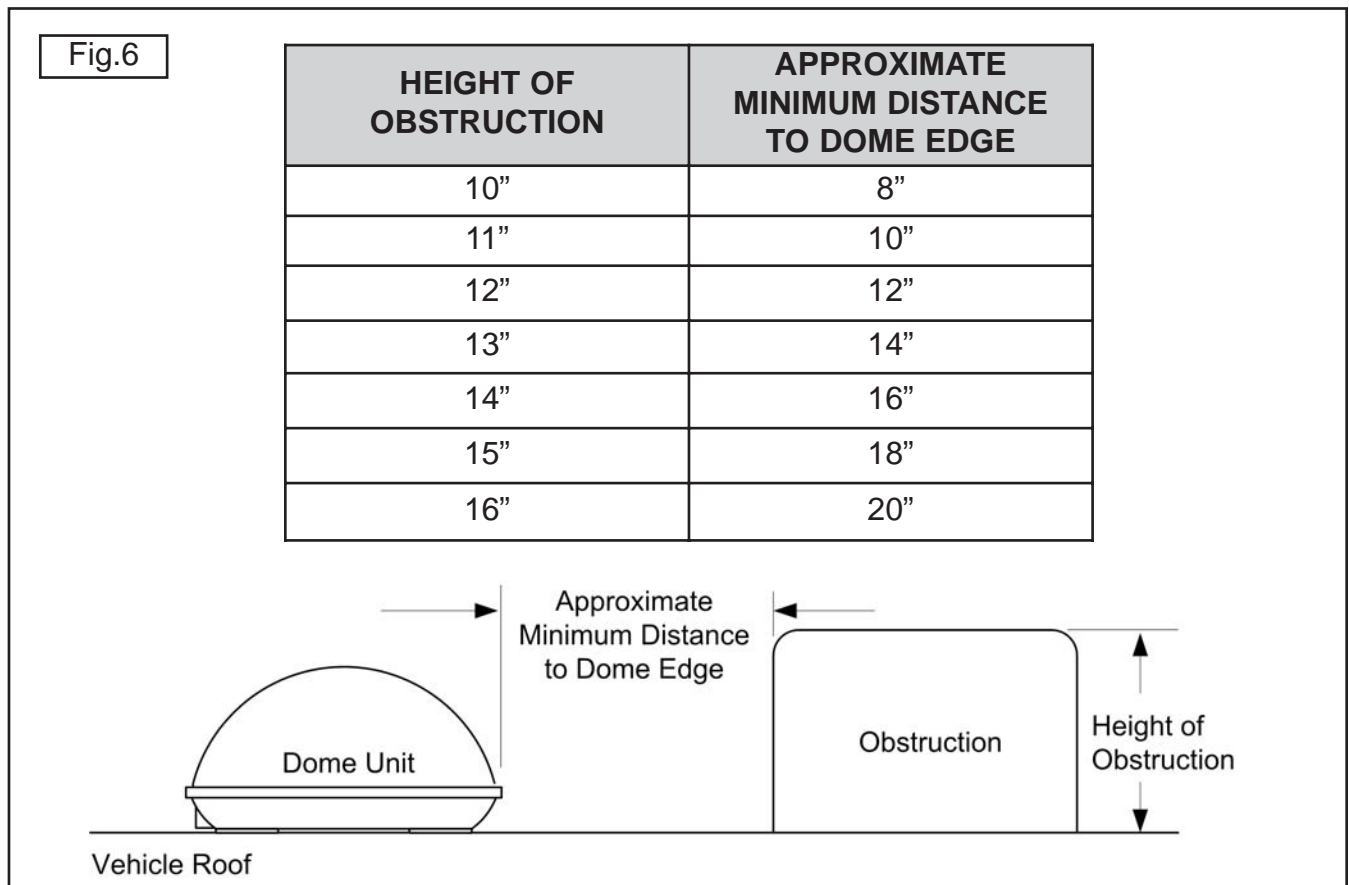
**YOU MUST PLUG THE SHIPPING BOLT HOLES WITH THE SUPPLIED PLUGS (ATTACHED TO TIE STRAP SHIPPING RESTRAINT).**

2. Remove and discard the tie strap and spacer (**KEEP RUBBER PLUGS AND GREASE PACKET**), and the 2 bolts and 2 washers that pass through the bottom of the base (**Fig. 5**).
3. Insert provided plugs into holes that were occupied by the shipping bolts. Inserted plugs should be flush with base (**Fig. 5**).



## DOMES UNIT LOCATION

4. Select an area on the roof for the dome unit and the location where the wiring will enter the vehicle through the roof to the satellite receiver, controller, and 12 volt power source inside, using the following criteria:
  - a) A shorter distance between the dome unit and the satellite receiver is most desirable.
  - b) The dome unit requires a 28 inch diameter mounting area.
  - c) The dome unit should be mounted on the centerline of the vehicle.
  - d) There must be no “line of sight” obstructions. Air conditioning units, other antennas, and storage areas that are too close to the dome unit may prevent the satellite signal from reaching the antenna (**Fig. 6**).

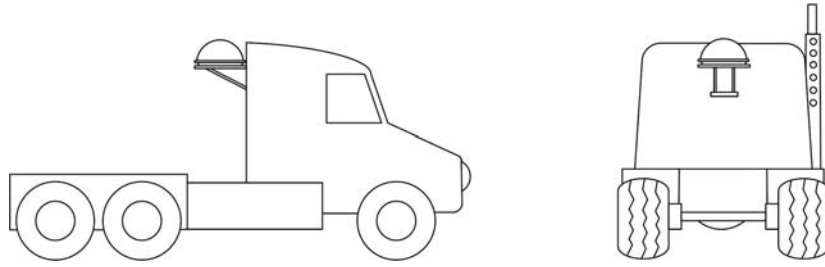


**IMPORTANT!** For installations on trucks with air shields, a bracket must be used for mounting the dome unit. The dome unit **MUST** be mounted to the air ride cab: **NEVER** to any structure mounted directly to the frame.

See bracket instructions for proper installation (Fig. 7).



Fig. 7



Example of truck installation using bracket.  
See bracket instructions for proper installation.

**IMPORTANT! The dome unit MUST be mounted to the air ride cab: NEVER to any structure mounted directly to the frame.**

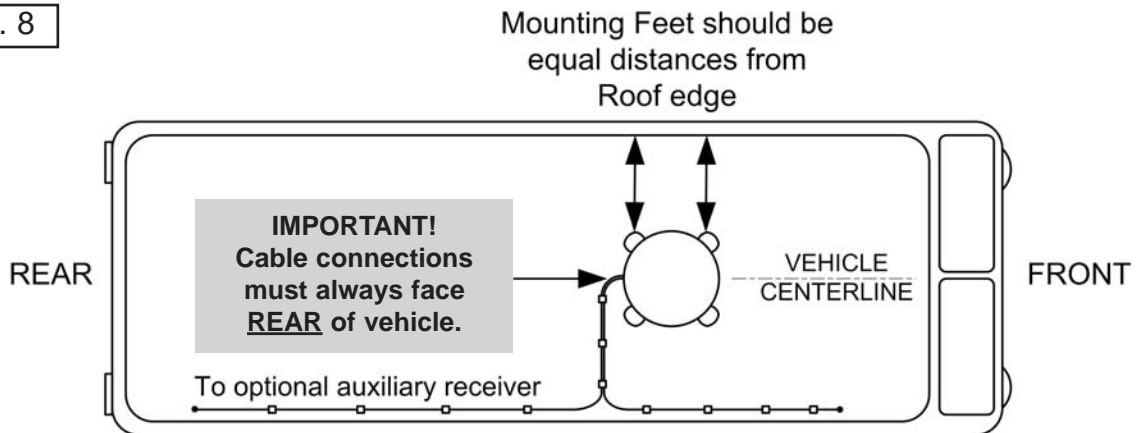
## DOMES UNIT INSTALLATION

**IMPORTANT! Make sure shipping restraints are removed from bottom of dome unit and plugs are inserted in holes (Fig. 5, Page 5).**

Cable connections must **ALWAYS** be positioned facing the rear of vehicle.

5. Place dome unit on installation location chosen using the criteria discussed in the previous section. Shipping restraints must be removed, plugs must be inserted in holes (**Fig. 5, Page 5**), and cable connections must be positioned facing rear of vehicle.
6. The dome unit must be positioned so that both feet on each side of the vehicle are equal distances from the roof edge. This should be checked by measuring the distance from each foot to the roof edge. Confirm that these measurements are equal (**Fig. 8**).

Fig. 8



**IMPORTANT! The dome unit should never be mounted so that it is tilted more than two degrees in any direction.**

Note: The installer is responsible for determining the most appropriate fastener to secure the dome unit to the roof. Depending on the roof material, fasteners such as lag screws, well nuts, sheet metal screws, toggle bolts and T anchors may be used, and should always be used in combination with a roof compatible sealant.

**IMPORTANT! The installer is responsible for weatherproofing all holes with sealant.**

7. Mount the dome unit. Use the pre-drilled holes in the mounting feet as a guide to install the fasteners into the roof. Use additional fasteners whenever necessary.
8. Test that the dome unit is secure by pulling upward from each foot location.

## EXTERNAL WIRING

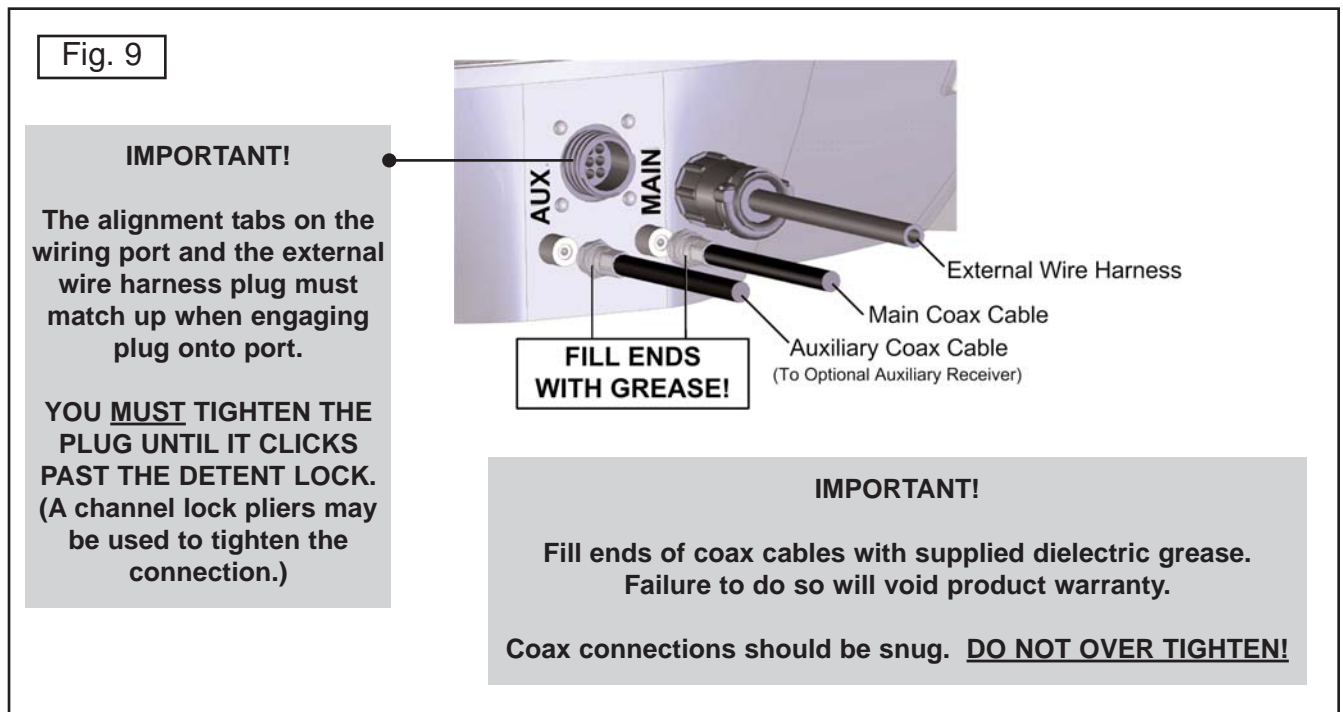
9. Plug external wire harness into wiring port on back of dome unit and tighten connection until it clicks past the detent lock (**Fig. 9**).

Note: The King-Dome is wired for multiple receiver support. There are two coax ports on the back of the dome unit. The one labeled "MAIN" **MUST** be connected to the main receiver in vehicle. This is the receiver that will control automatic satellite switching if applicable. The one labeled "AUX" can be used for an additional receiver.

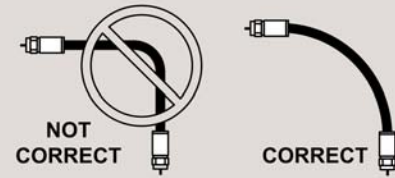
**IMPORTANT! You must fill the ends of all external coax cables with the supplied dielectric grease. Failure to do so will void product warranty.**

10. Fill end of coax cable that will connect to the MAIN port on the dome unit with supplied dielectric grease. Connect this end of the coax cable to the MAIN port and tighten connection (**Fig. 9**). **DO NOT OVER TIGHTEN.**

If using a second (auxiliary) receiver, fill end of second coax cable and connect it to the AUX port. Tighten connection. **DO NOT OVER TIGHTEN.**



## AVOID SHARP BENDS WHEN ROUTING COAX!



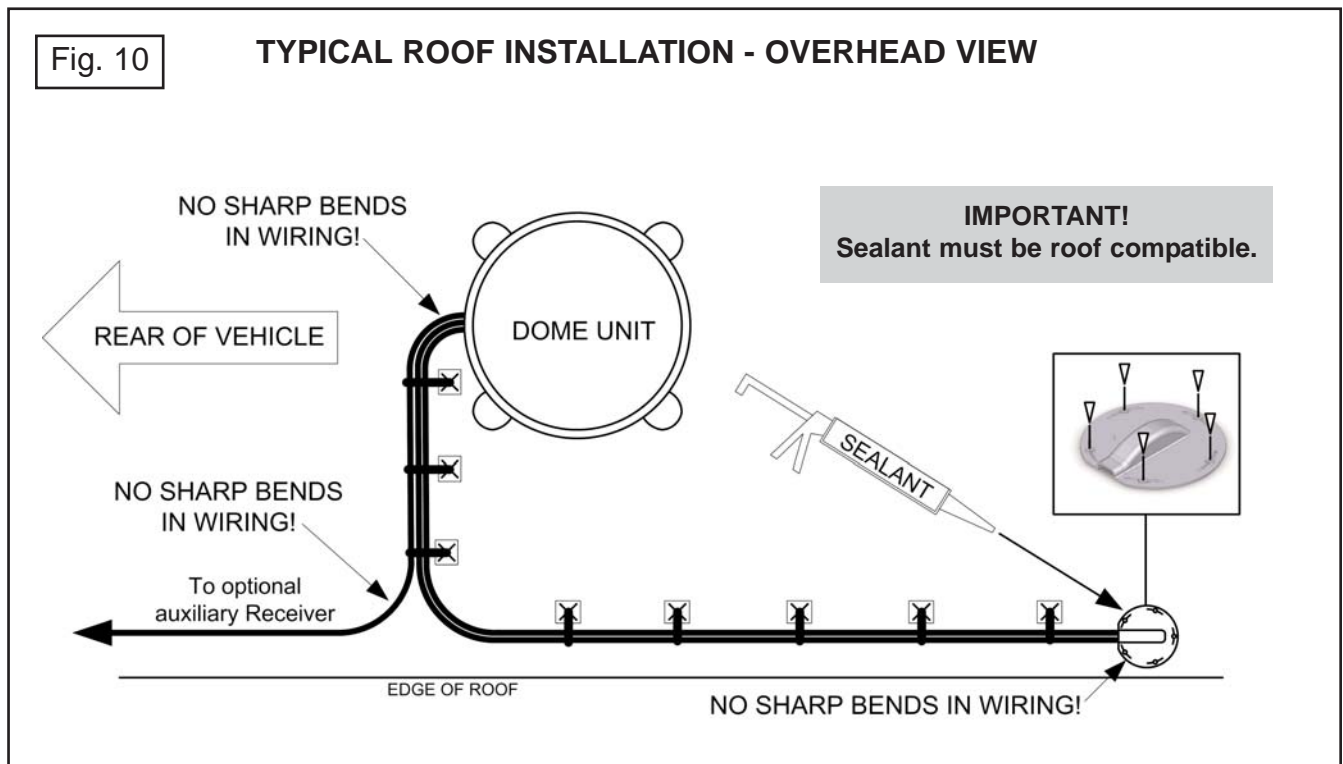
11. Run wires from the back of the dome unit to the roof edge, then along edge to location where wiring will be fed into the vehicle. If installing an optional auxiliary receiver, run auxiliary coax to location where it will enter the vehicle. Secure wiring to roof every 12-18 inches (**Fig. 10**).

### IMPORTANT! SEALANT MUST BE ROOF COMPATIBLE.

Installer is responsible for determining proper roof compatible fasteners for cable entry cover.

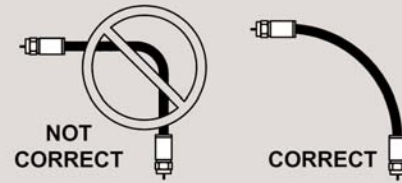
Roof holes for cables must be sealed so they are completely waterproof. Mounting holes, perimeter of cable entry cover and cable opening of cable entry cover must be sealed so they are completely waterproof.

12. Drill 3/4" hole through the roof and into the cabinet where receiver is stored. Feed wiring down through hole. Seal opening with roof compatible sealant so that it is completely waterproof (inside and outside of the 3/4" hole). Repeat for auxiliary coax if present.
13. Fasten cable entry cover to roof. Seal mounting holes, perimeter of cover and cable opening so they are completely waterproof.



14. Remove blue protective sheet and red "position to rear" sticker from the dome unit.

## AVOID SHARP BENDS WHEN ROUTING COAX!



### INTERNAL WIRING

Note: Using multiple receivers is not recommended for multi-satellite services where automatic satellite switching is desired.

Components and wiring supplied with the 9704/9704-LP are shown in black.  
Existing components and wiring or those sold separately are shown in gray.

#### 15. Choose your desired wiring configuration:

DIRECTV / Bell TV  
(single satellite)

Fig. 11, Page 11

DIRECTV / Dish Network / Bell TV  
(2 or more satellites with auto switching)

Fig. 12, Page 12

#### 16. Inside the vehicle, make the connections as shown in the wiring diagrams, keeping in mind the following important points:

- a) The connection between the dome unit and the receiver must be a direct connection with no devices in between.
- b) Power connection must be a non-shared circuit. Excessive current draw on the circuit will cause the unit to operate improperly. Power and ground connections must be made after the wires are connected to the dome unit.
- c) If fusing the circuit, the fuse must be rated at 7.5 amps.
- d) HDTV receivers require HDMI or component video/audio cable connection to TV (sold separately).

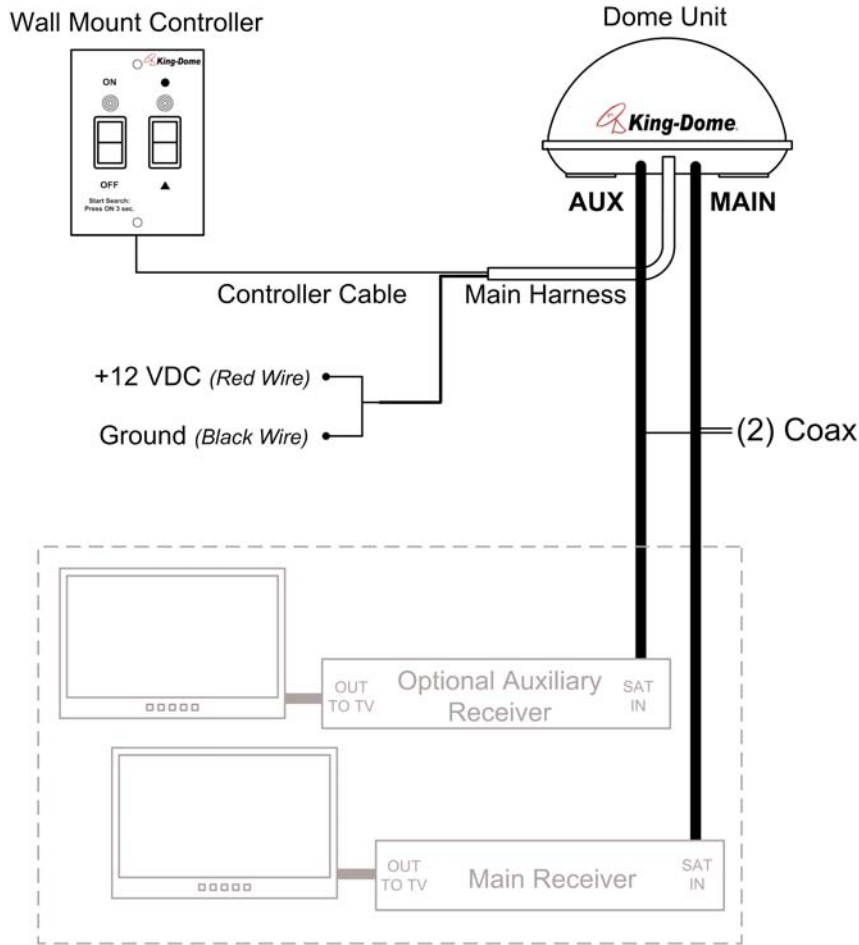
#### 17. When installation is complete, go to Section 4, **ANTENNA CONFIGURATION** on page 13.

Fig. 11

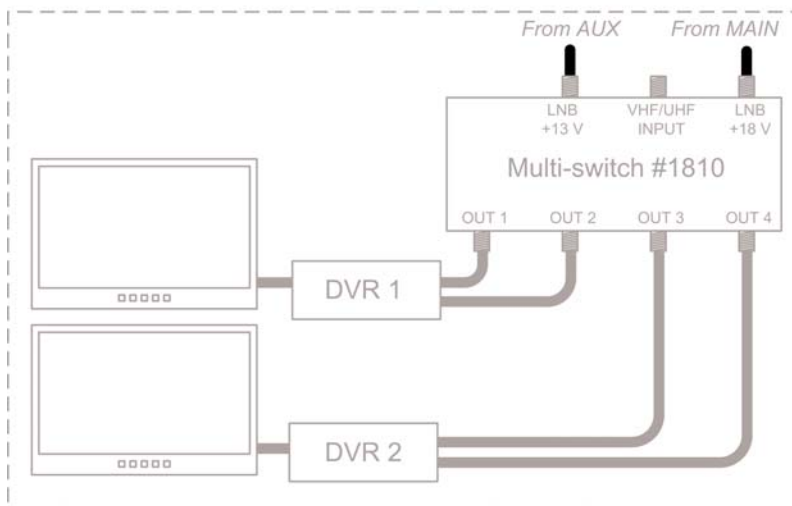
# DIRECTV / Bell TV

## King-Dome Models 9704, 9704-LP & 9704-LP-HD

### Single satellite



(OR)



**IMPORTANT!**  
Main coax cable must be connected to 18V input on multi-switch.

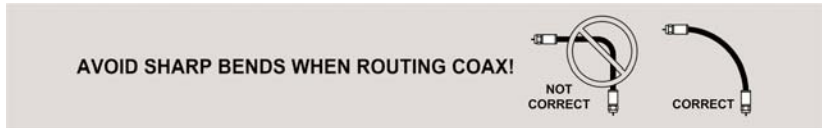
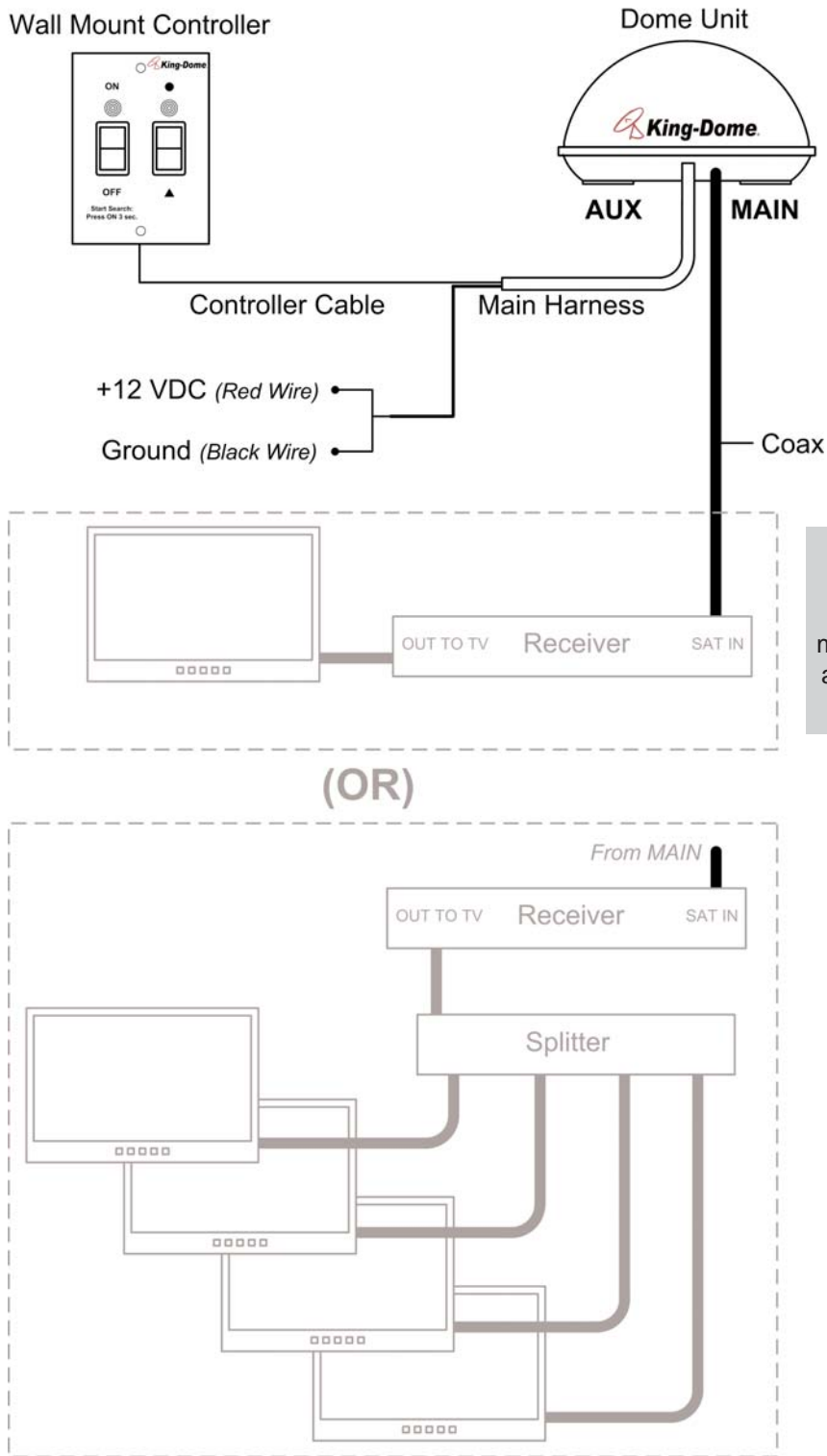


Fig. 12

# DIRECTV / Dish Network / Bell TV

## King-Dome 9704, 9704-LP & 9704-LP-HD

2 or more satellites with auto switching



Note:  
Using multiple receivers is not recommended for multi-satellite services where automatic satellite switching is desired.

AVOID SHARP BENDS WHEN ROUTING COAX!



The King-Dome is factory pre-set for DIRECTV standard digital programming broadcast from the 101° W satellite.

If you also receive your local channels from DIRECTV's 119 satellite or if you subscribe to Dish Network or Bell TV programming, you must re-configure the antenna to work with your satellite service. Doing this will allow the King-Dome to lock on the correct satellites to receive your programming and also enable automatic satellite switching via the receiver's remote control for multi-satellite service.

Antenna configuration is a one time procedure that **MUST BE COMPLETED** before using your King-Dome antenna.

To configure your antenna, follow these steps:

### 1. SATELLITE SERVICE OPTIONS

Determine the service you want to program (pages 14-15).

### 2. ANTENNA CONFIGURATION

Configure the antenna for the service you chose in step 1.

You can use either:

**A)** the supplied wall mount controller (page 16).

or

**B)** keypad #1844 (page 23).



### 3. DISH AND BELL TV CHECK SWITCH PROCEDURE

For all Dish Network and Bell TV services:

Configure your receiver for mobile use by running a check switch (page 27).

# STEP 1: SATELLITE SERVICE OPTIONS

## DIRECTV

### Single Satellite 101

Receive programming from the DIRECTV 101 satellite only.

### DIRECTV Plus: 101, 119

Receive standard digital programming from the 101, and locals from the 119, and automatically switch between the two.

**IMPORTANT!** The King-Dome can receive available HDTV programming from DIRECTV Ku band satellites at 101° and 119°. It will not receive channels broadcast from DIRECTV's Ka band satellites at 99° and 103°.

## BELL TV

(May not be available in all areas due to geographic variance in satellite signal strength.)

### Standard Digital 91

Receive programming from the 91 satellite only.

### HDTV 82/91 and HDTV 82/91 Alternate

Automatically switch between the 82 and 91 satellites for Bell TV by using the receiver's remote control.

Choose the HDTV 82/91 option. If you can not lock onto the satellites in step 2 of the check switch procedure (page 27), you may get better results by choosing the HDTV 82/91 Alternate.



# DISH NETWORK

## Dish 500

Automatically switch between the 110 and 119 satellites for Dish Network Standard Digital Service by simply changing channels with the receiver's remote control.

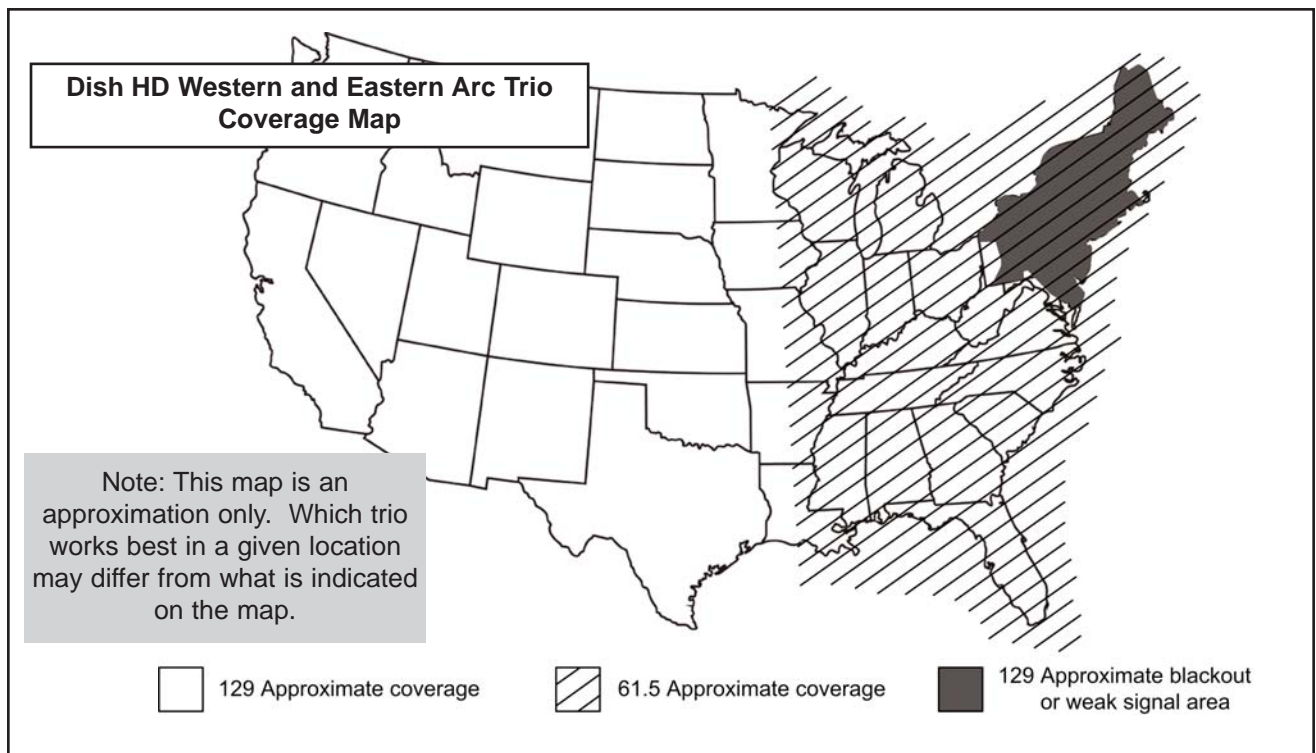
## Dish HD Eastern Arc

Automatically switch between the 61.5 and 72 satellites for Dish Network by simply changing channels with the receiver's remote control.

## Dish HD Eastern and Western Arc with Locals

Dish Network HD programming is broadcast from multiple satellites including these two trios: the Dish HD Western Arc Trio - 110, 119, 129 satellites, and the Dish HD Eastern Arc Trio - 61.5, 72, 77 satellites. The map below shows the approximate coverage for each trio.

The King-Dome antenna can be easily configured to work with either trio. By choosing the appropriate trio based on where you are, you can receive all of your desired programming.



## Dish HD Alternate with Locals

Choose this option for satellites 61.5, 110, and 119 only if you are unable to view your programming with Dish HD Western Arc or Dish HD Eastern Arc with Locals.

# STEP 2-A: ANTENNA CONFIGURATION

## USING WALL MOUNT CONTROLLER

Note: If using the keypad for programming, go to page 23.

On pages 17-21, find your service and follow the instructions in the box.

### DIRECTV

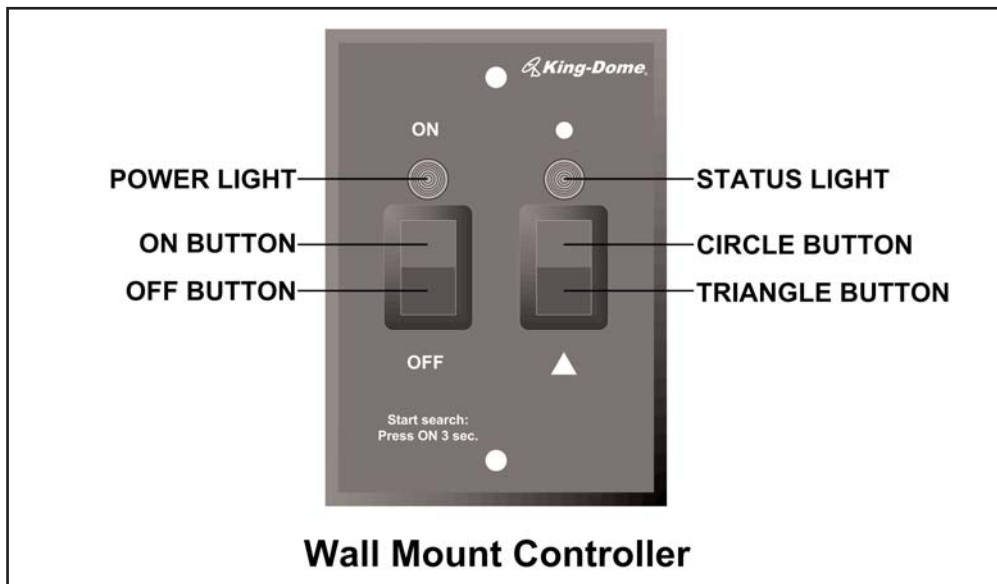
Single Satellite 101 (Factory Pre-set) . . . . .	Page 17
DIRECTV Plus . . . . .	Page 17

### Dish Network

Dish 500 . . . . .	Page 18
Dish HD Eastern Arc . . . . .	Page 18
Dish HD Western Arc with Locals . . . . .	Page 19
Dish HD Eastern Arc with Locals . . . . .	Page 19
Dish HD Alternate with Locals . . . . .	Page 20

### Bell TV

Bell TV Standard Digital 91 . . . . .	Page 20
Bell TV HDTV 82/91 . . . . .	Page 21
Bell TV HDTV 82/91 Alternate . . . . .	Page 21



# DIRECTV ANTENNA CONFIGURATION

## Single Satellite 101

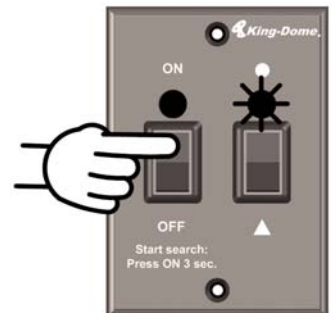
The King-Dome is factory pre-set for the DIRECTV 101 satellite. Unless the antenna has been configured for another option since leaving the factory, **PERFORM STEP 5 ONLY**.

1. On the King-Dome controller, press and release the ON button. Wait for the status light to flash orange, and then **WAIT 4 MORE SECONDS**.
2. Press and release the ON button **16** times.  
The status light starts rapidly flashing green and red.
3. Press and hold the ▲ button for 4 seconds.  
The status light will turn orange for 1 second, and then start flashing green or red.
4. Press OFF.
5. Set your receiver for round dish-1 satellite (do this through the receiver's satellite set-up menu screens). Configuration is complete. **Go to page 30.**



## DIRECTV Plus (satellites 101, 119)

1. On the King-Dome controller, press and release the ON button. Wait for the status light to flash orange, and then **WAIT 4 MORE SECONDS**.
2. Press and release the ON button **8** times.  
The status light starts rapidly flashing green and red.
3. Press and hold the ● button for 4 seconds.  
The status light will turn orange for 1 second, and then start flashing green or red.
4. Press OFF.
5. Set your receiver for oval dish-2 satellites (do this through the receiver's satellite set-up menu screens).  
**If you have an H23 receiver**, choose the following dish configuration settings.  
Dish Type: 02: 3-LNB (18"x20"), Switch Type: 02:Multiswitch.



Configuration is complete. **Go to page 30.**

## DISH NETWORK ANTENNA CONFIGURATION

### DISH 500 (satellites 110, 119)

1. On the King-Dome controller, press and release the ON button. Wait for the status light to flash orange, and then **WAIT 4 MORE SECONDS**.
2. Press and release the ON button **12** times. The status light starts rapidly flashing green and red.
3. Press and hold the ● button for 4 seconds. The status light will turn orange for 1 second, and then start flashing green or red.
4. Press OFF.
5. After you have successfully configured the antenna, you must configure your receiver for mobile use.



To configure your receiver, **GO TO PAGE 27 AND RUN THE CHECK SWITCH.**

### DISH HD Eastern Arc (satellites 61.5, 72)

1. On the King-Dome controller, press and release the ON button. Wait for the status light to flash orange, and then **WAIT 4 MORE SECONDS**.
2. Press and release the ON button **36** times. The status light starts rapidly flashing green and red.
3. Press and hold the ON button for 4 seconds. The status light will turn orange for 1 second, and then start flashing green or red.
4. Press OFF.
5. After you have successfully configured the antenna, you must configure your receiver for mobile use.



To configure your receiver, **GO TO PAGE 27 AND RUN THE CHECK SWITCH.**

## DISH HD Western Arc with Locals (satellites 110, 119, 129)

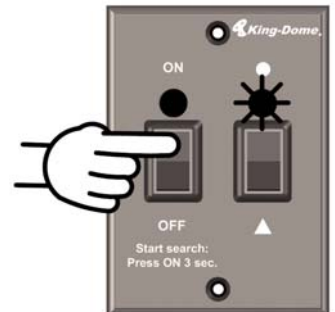
1. On the King-Dome controller, press and release the ON button. Wait for the status light to flash orange, and then **WAIT 4 MORE SECONDS**.
2. Press and release the ON button **20** times. The status light starts rapidly flashing green and red.
3. Press and hold the ● button for 4 seconds. The status light will turn orange for 1 second, and then start flashing green or red.
4. Press OFF.
5. After you have successfully configured the antenna, you must configure your receiver for mobile use.



To configure your receiver, **GO TO PAGE 27 AND RUN THE CHECK SWITCH.**

## DISH HD Eastern Arc with Locals (satellites 61.5, 72, 77)

1. On the King-Dome controller, press and release the ON button. Wait for the status light to flash orange, and then **WAIT 4 MORE SECONDS**.
2. Press and release the ON button **12** times. The status light starts rapidly flashing green and red.
3. Press and hold the ▲ button for 4 seconds. The status light will turn orange for 1 second, and then start flashing green or red.
4. Press OFF.
5. After you have successfully configured the antenna, you must configure your receiver for mobile use.



To configure your receiver, **GO TO PAGE 27 AND RUN THE CHECK SWITCH.**

## DISH HD Alternate with Locals (satellites 61.5, 110, 119)

1. On the King-Dome controller, press and release the ON button. Wait for the status light to flash orange, and then **WAIT 4 MORE SECONDS**.
2. Press and release the ON button **16** times.  
The status light starts rapidly flashing green and red.
3. Press and hold the ● button for 4 seconds.  
The status light will turn orange for 1 second, and then start flashing green or red.
4. Press OFF.
5. After you have successfully configured the antenna, you must configure your receiver for mobile use.

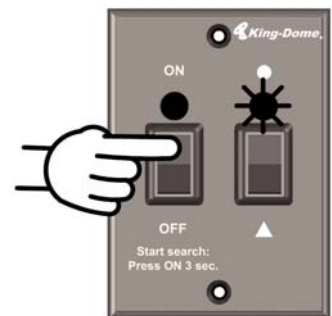


To configure your receiver, **GO TO PAGE 27 AND RUN THE CHECK SWITCH.**

## BELL TV ANTENNA CONFIGURATION

### Bell TV Standard Digital 91 (satellite 91)

1. On the King-Dome controller, press and release the ON button. Wait for the status light to flash orange, and then **WAIT 4 MORE SECONDS**.
2. Press and release the ON button **8** times.  
The status light starts rapidly flashing green and red.
3. Press and hold the ▲ button for 4 seconds.  
The status light will turn orange for 1 second, and then start flashing green or red.
4. Press OFF.
5. After you have successfully configured the antenna, you must configure your receiver for mobile use.



To configure your receiver, **GO TO PAGE 27 AND RUN THE CHECK SWITCH.**

## Bell TV HDTV 82/91 (satellites 82, 91)

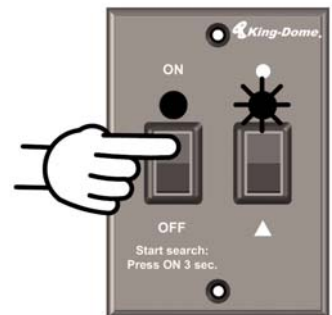
1. On the King-Dome controller, press and release the ON button. Wait for the status light to flash orange, and then **WAIT 4 MORE SECONDS.**
2. Press and release the ON button **32** times.  
The status light starts rapidly flashing green and red.
3. Press and hold the ON button for 4 seconds.  
The status light will turn orange for 1 second, and then start flashing green or red.
4. Press OFF.
5. After you have successfully configured the antenna, you must configure your receiver for mobile use.



To configure your receiver, **GO TO PAGE 27 AND RUN THE CHECK SWITCH.**

## Bell TV HDTV 82/91 Alternate (satellites 82, 91)

1. On the King-Dome controller, press and release the ON button. Wait for the status light to flash orange, and then **WAIT 4 MORE SECONDS.**
2. Press and release the ON button **36** times.  
The status light starts rapidly flashing green and red.
3. Press and hold the ▲ button for 4 seconds.  
The status light will turn orange for 1 second, and then start flashing green or red.
4. Press OFF.
5. After you have successfully configured the antenna, you must configure your receiver for mobile use.



To configure your receiver, **GO TO PAGE 27 AND RUN THE CHECK SWITCH.**



This page intentionally left blank.



# STEP 2-B: ANTENNA CONFIGURATION

## USING KEYPAD #1844



Note: If using the wall mount controller for programming, go to page 16.

Find your service in the chart below.

Determine your Switching Mode and Provider Code, and then go to page 24.

### SWITCHING MODE AND PROVIDER CODE CHART

Service	Satellites	Switching Mode	Provider Code
<b>DIRECTV</b>			
Single Satellite 101 (Factory Preset)	101	02	01
DIRECTV Plus	101, 119	16	01
<b>Dish Network</b>			
Dish 500 (SW21 Switch)	110, 119	26	10
Dish HD Eastern Arc (SW21 Switch)	61.5, 72	26	62
Dish HD Western Arc with Locals (SW64 Switch)	110, 119, 129	62	10
Dish HD Eastern Arc with Locals (SW64 Switch)	61.5, 72, 77	62	62
Dish HD Alternate with Locals (SW64 Switch)	61.5, 110, 119	66	10
<b>Bell TV</b>			
Standard Digital 91	91	02	91
HDTV 82/91	82, 91	26	82
Bell TV HDTV 82/91 Alternate	82, 91	26	91

Note: This King-Dome can receive available HDTV programming from DIRECTV Ku band satellites at 101° and 119°. It will not receive channels broadcast from DIRECTV's Ka band satellites at 99° and 103°.

Perform the programming on these two pages using the codes determined from the chart on page 23 (**EXCEPT DIRECTV 101 SERVICE**).

If you have **DIRECTV 101** Service, set your receiver for round dish-1 satellite (do this through the receiver's satellite set-up menu screens), and then go to page 30, OPERATION).

## SET SATELLITE SWITCHING MODE

1. Unplug the controller and plug in the Keypad.
2. Press ON.
3. Press \* **46 #** to display the current satellite switching mode (see chart on page 23).
4. To change the satellite switching mode, press
  - \* **96 #**
  - \* **66 #**
  - \* **88 #**
5. Press the UP and DOWN arrows (2 and 8 keys) to choose your desired switching mode from the chart on page 23.
6. Press \* **47 #** to lock in setting.
7. Turn unit OFF and back ON to save setting.
8. Press \* **46 #** to display and verify code for new satellite switching mode.
9. Continue with SET SATELLITE PROVIDER CODE on next page.



## SET SATELLITE PROVIDER CODE

1. Press \* **24 #** to display the current service provider (see chart on page 23).
2. To change the current service provider, press
  - \* **96 #**
  - \* **66 #**
  - \* **88 #**



3. Press the UP and DOWN arrows (2 and 8 keys) to choose your desired service provider from the chart on page 23.
4. Press \* **25 #** to lock in setting.
5. Turn unit OFF and back ON to save setting.
6. Press \* **24 #** to display and verify code for new service provider.
7. Press OFF.
8. Unplug the Keypad and plug the controller back in.
9. Continue with RECEIVER CONFIGURATION below.

## RECEIVER CONFIGURATION

### DIRECTV Plus: 101/119

Set your receiver for oval dish-2 satellites (do this through the receiver's satellite set-up menu screens), and then go to page 30, OPERATION.

**If you have an H23 receiver**, choose the following dish configuration settings.  
Dish Type: 02: 3-LNB (18"x20"), Switch Type: 02:Multiswitch.

For all of the following, go to page 27 and run the check switch.

**Dish 500**

**Dish HD Eastern Arc**

**Dish HD Western Arc with Locals**

**Dish HD Eastern Arc with Locals**

**Dish HD Alternate with Locals**

**Bell TV Standard Digital 91**

**Bell TV HDTV 82/91**

**Bell TV HDTV 82/91 Alternate**



This page intentionally left blank.

# STEP 3: DISH AND BELL TV CHECK SWITCH PROCEDURE

**IMPORTANT! YOU MUST HAVE COMPLETED THE ANTENNA CONFIGURATION (PAGE 13), AND PERFORMED A SUCCESSFUL SEARCH (STEP 2 BELOW), BEFORE RUNNING THE CHECK SWITCH (STEP 3 BELOW).**

Note: For automatic satellite switching, King Controls recommends using a Dish Network model 311 receiver for Dish 500, and a Dish Network model VIP211 or a VIP211k HDTV receiver for Dish HD Eastern Arc / Dish HD Western Arc with Locals / Dish HD Eastern Arc with Locals / Dish HD Alternate with Locals. Do not use dual tuner receivers or receivers with built-in recorders.

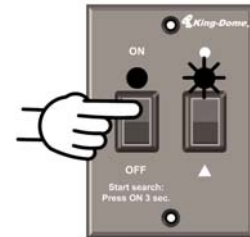
If you do not have a clear view of the satellites, the switch will not load correctly.

The SW21 and SW64 switches are a receiver software configuration that is loaded into the receiver after running a check switch test with the dish locked on and configured for the appropriate service.

This one time procedure will not need to be repeated after successful installation, unless

- a) check switch test is run again while connected to a home dish system.
- b) check switch is run when a receiver is not connected.
- c) you travel outside the coverage area of the pre-set satellite trio and switch trios (Dish HD Western Arc with Locals/Dish HD Eastern Arc with Locals).
- d) you are parked in an area where the selected satellites are blocked, but are able to select alternate satellites and get signal.

1. Turn on the TV and satellite receiver.
2. On the King-Dome controller, press and hold the ON button for **3 FULL SECONDS**.



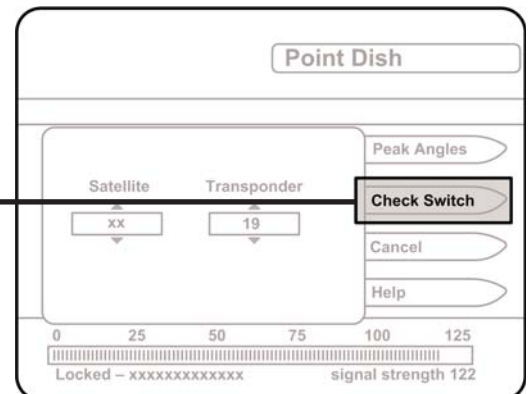
The antenna will lock onto all the appropriate satellites before completing the search process.

**After the satellites have been located and the acquisition process is complete, the status light will be steady green.**

**If the antenna cannot acquire the designated satellites, you may have to choose an alternate satellite option. See pages 14-15 for details.**

3. On the receiver remote, press Menu, 6, 1, 1.
4. Highlight Check Switch and press select.

**Note: Some receivers may prompt you to select check switch a second time to initiate the test.**

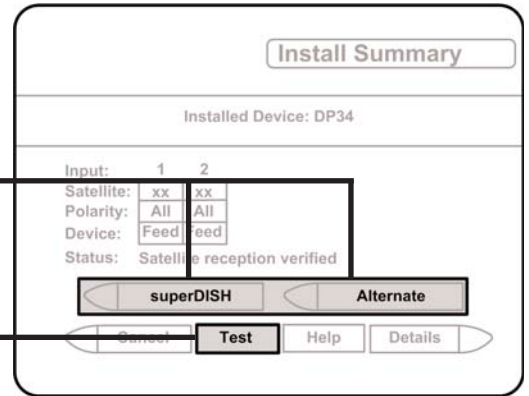


(Continued on next page)

Screen graphics may vary.

**Note: Not all receivers will display a screen with options that include superdish and alternate boxes.**

5. Make sure Superdish and Alternate boxes are **NOT** selected.
6. Highlight Test and press Select.



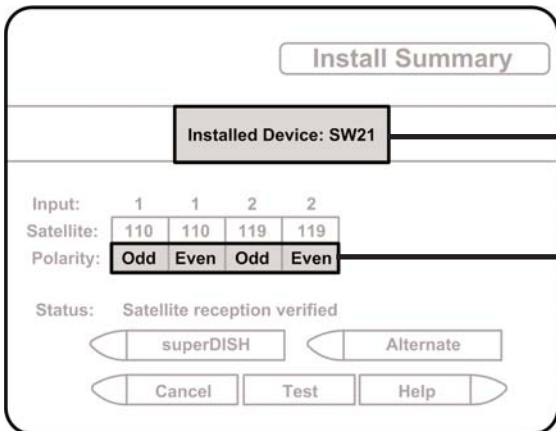
Screen graphics may vary.

The unit will perform a check switch test, and the antenna will periodically move back and forth. (This process will take several minutes.)

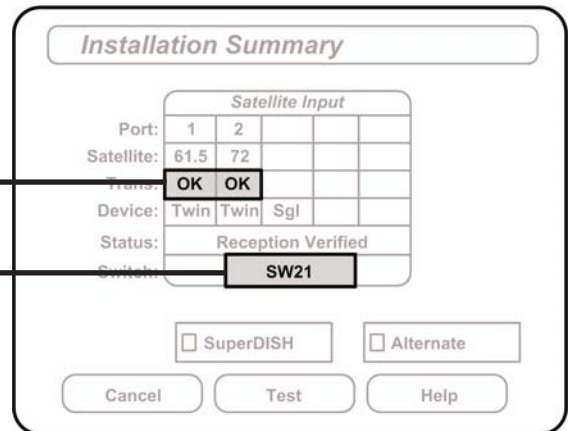
7. When test is complete, a screen similar to one **below or on the next page** should appear. After screen verification, continue with check switch procedure on next page.

**Receivers are always changing, and therefore screen graphics may vary. Older Dish receivers, for example, may not show "OK" for the 72 satellite.**

**DISH 500**

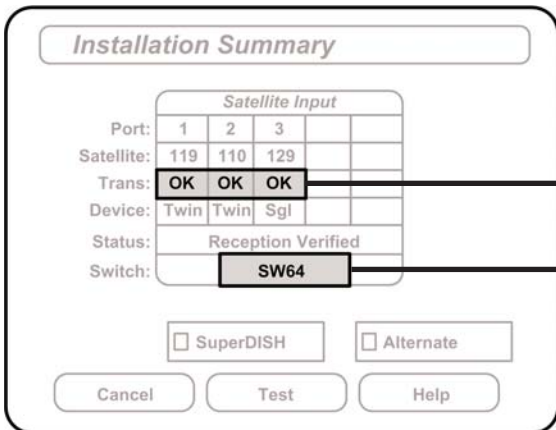


**DISH HD Eastern Arc**

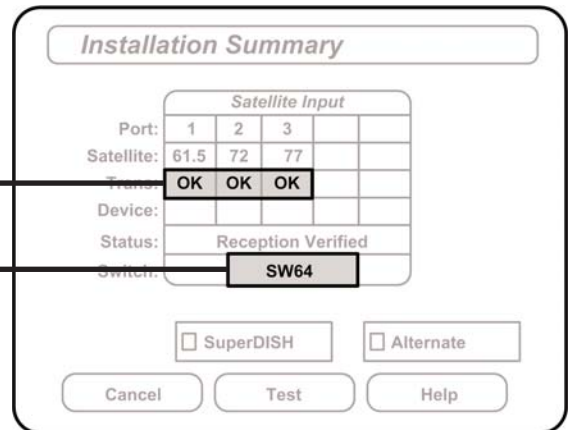


**MUST SHOW "SW21"**  
**NO "X"s**

**DISH HD Western Arc with Locals**



**DISH HD Eastern Arc with Locals**



**NO "X"s"**  
**MUST SHOW "SW64"**

## Dish HD Alternate with Locals

**Installation Summary**

Satellite Input				
Port:	1	2	3	
Satellite:	119	110	61.5	
Trans:	OK	OK	OK	
Device:	Twin	Twin	Sgl	
Status:	Reception Verified			
Switch:	SW64			

SuperDISH       Alternate

NO "X"s

MUST SHOW  
"SW64"

**Bell TV 91**

**Install Summary**

NO SWITCH DETECTED

Input:	1	1	2	2
Satellite:	91	91	x	x
Polarity:	Odd	Even	x	x

Status: Satellite reception verified

"NO SWITCH  
DETECTED"  
or  
"INSTALLED  
DEVICE  
UNKNOWN"  
or  
similar

MUST SHOW  
"SW21"  
NO "X"s

**Bell TV HDTV 82/91**  
**Bell TV HDTV 82/91 Alternate**

**Install Summary**

Installed Device: SW21

Input:	1	1	2	2
Satellite:	82	82	91	91
Polarity:	Odd	Even	Odd	Even

Status: Satellite reception verified

If indicated results are not obtained, go back to Step 3 and run test again. Contact King Controls if the check switch fails to load after 4 attempts.

8. Save the settings, exit to the main menu screen and wait for programming to download.
9. **DISH HD Eastern and Western Arc with Locals only:** Verify your saved settings show your desired satellite trio 61.5, 72, 77 or 110, 119, 129. To switch trios, see page 32.

Configuration is complete. Go to page 30, OPERATION.

**IMPORTANT:** Unless you have DIRECTV service for single satellite 101, you must have completed the antenna configuration as instructed in Section 4 ANTENNA CONFIGURATION.

There must be a clear “line of sight” to the southern sky. Mountains, buildings, trees, telephone poles, etc. can all block the satellite signal from reaching the antenna.

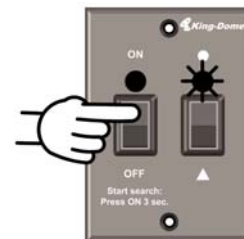
The distance driven since last performing a search may affect how long it takes for the King-Dome to find the satellite.

This King-Dome can receive available HDTV programming from DIRECTV Ku band satellites at 101° and 119°. It will not receive channels broadcast from DIRECTV’s Ka band satellites at 99° and 103°.

## SEARCH PROCEDURE

1. Turn on TV and Receiver. “Searching for Satellite” or similar will appear on TV screen.

2. On King-Dome controller, press and hold ON for **3 FULL SECONDS**.



Power light turns steady GREEN.

### STATUS LIGHT

- a) flashes a variety of colors for about 30 seconds
- b) RED-flashing
- c) GREEN-flashing (may start flashing RED again)
- d) GREEN-steady

### SYSTEM STATUS

- unit performs self-diagnostic
- search in progress
- potential satellite found
- satellite(s) found and search is complete

3. When the status light is steady green, select a channel or the program guide to view your programming. Enjoy! **(DO NOT TURN THE KING-DOME OFF IF USING THE AUTOMATIC SATELLITE SWITCHING FEATURE.)**

Note: If the status light is steady GREEN and your programming does not appear, press the reset button on your DIRECTV receiver. If using Dish Network, hold the receiver power button in for 10 seconds to reset your receiver. Consult your receiver owner’s manual for further details. (Note that it may take several minutes for the guide to re-download.)

When receiver reset is complete and the guide is downloaded, select a channel or the program guide to view your programming.



## AUTOMATIC SATELLITE SWITCHING

1. After you have properly configured the King-Dome antenna for your satellite service, the King-Dome will automatically switch between satellites by simply selecting your desired channel using the receiver's remote control.

Note: For better performance when using the automatic satellite switching feature, change channels by selecting your program from the channel guide rather than channel surfing.

It is common for the picture to pixel or display an error message when the antenna is switching between satellites, or if the signal has been temporarily blocked. PLEASE BE PATIENT. THE PICTURE WILL RETURN.

If an error message appears for an extended period, selecting CANCEL may help clear the message more quickly.

Dish Network HD users: If you are unable to receive all of your HD programming, see **Dish Network HDTV: Changing the Satellite Trio** on page 32.

# DISH NETWORK HDTV: Changing the Satellite Trio

## Dish HD Western and Eastern Arc with Locals

**IMPORTANT!** Perform this procedure only if you are unable to receive all of your HD programming in a particular area of the country.

You cannot use this method to change trios if the antenna has not been initially configured for Dish HD Western Arc with Locals or Dish HD Eastern Arc with Locals (see **ANTENNA CONFIGURATION** section).

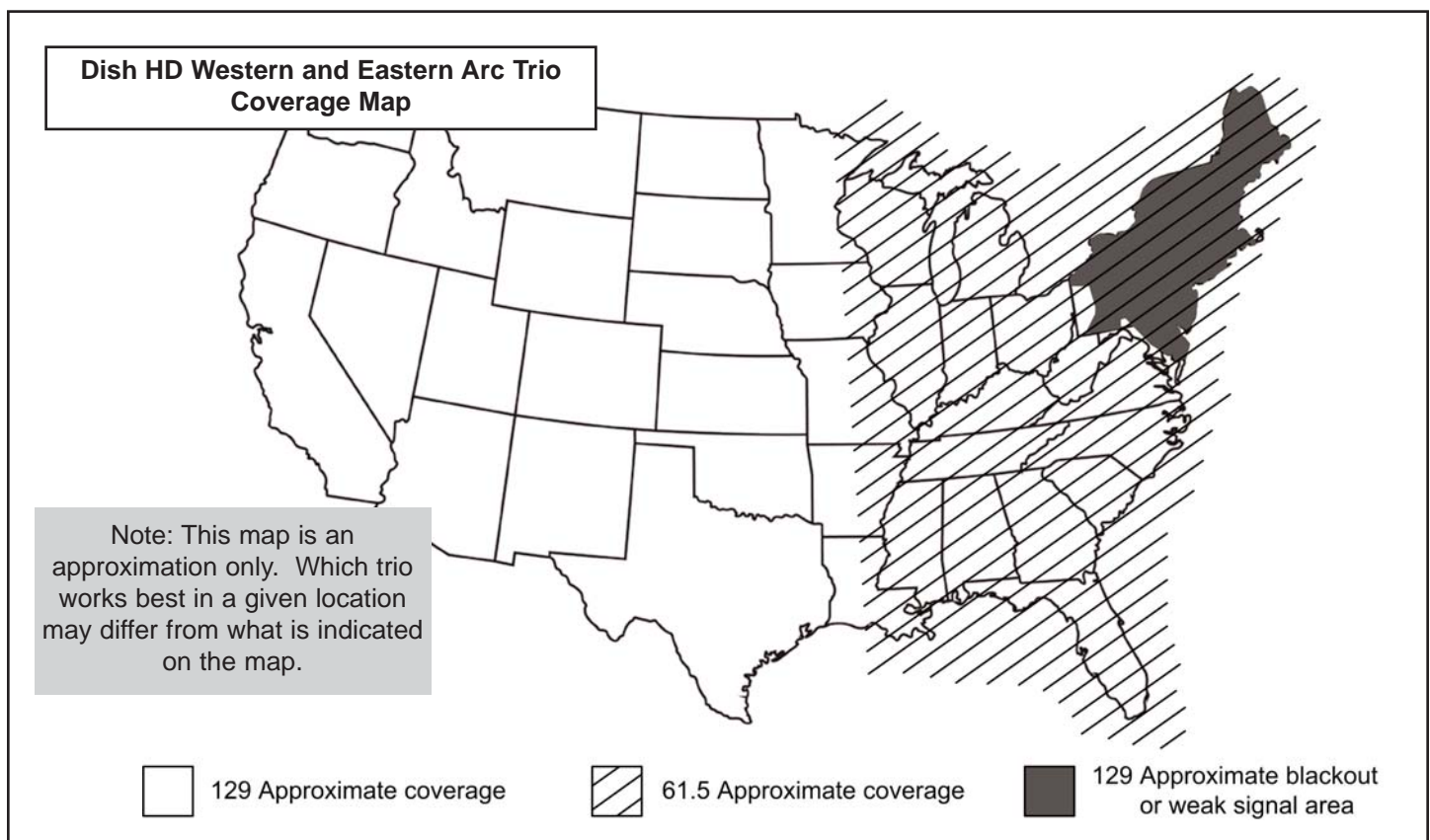
You can only switch between the Dish HD Western Arc with Locals and the Dish HD Eastern Arc with Locals Trios. The Dish HD Alternate with Locals Trio is not included in this function. (See **ANTENNA CONFIGURATION** for when and how to choose the Dish HD Alternate with Locals Trio.)

Dish Network HD programming is broadcast from multiple satellites including these two trios:

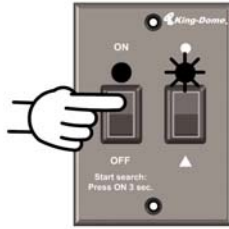
- the Dish HD Western Arc with Locals Trio: 110, 119, 129 satellites
- the Dish HD Eastern Arc with Locals Trio: 61.5, 72, 77 satellites

The map below shows the approximate coverage for each trio.

The King-Dome antenna can be easily configured to work with either trio as you travel from one coverage area to another. By choosing the appropriate trio based on where you are, you can receive all of your desired programming.



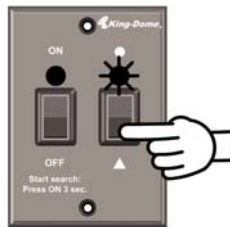
1. Press ON. Wait for the Status Light to flash orange, and then **wait 4 more seconds.**



2. Press and release ON 4 times. Status Light starts rapidly flashing green and red.
3. Select the trio you want to change to:

### Dish HD Eastern Arc Trio 61.5, 72, 77

Press and hold ▲ for 4 seconds.



The Status Light turns orange for 1 second and then starts flashing green or red.

### Dish HD Western Arc Trio 110, 119, 129

Press and hold ● for 4 seconds.



The Status Light turns orange for 1 second and then starts flashing green or red.

4. Turn the unit off.
5. Perform a stationary search and reload the check switch (page 27).  
**YOU MUST DO THIS STEP!**

#### EXTREMELY IMPORTANT!

You **MUST** perform a stationary search and reload the check switch any time you switch trios.

## SECTION 6

**TROUBLESHOOTING**

SYMPTOM	POSSIBLE REASON	COURSE OF ACTION
Unit does not find satellite. (STATUS light flashes red or green.)	Did not hold ON button for <u>3 FULL SECONDS.</u>	Hold ON button for <u>3 FULL SECONDS.</u>
STATUS light flashes orange.	Before search: bad coax connection.  After unsuccessful search (approximately 25 minutes): obstruction in line of sight between dome unit and satellite.	Call King Controls.  Move vehicle to have unobstructed view of southern sky.
STATUS light does not stop rapidly flashing red and green.	Self check failed: potential motor problem.	Call King Controls.
STATUS light does not turn on or is dim.	Bad power source (low voltage).  Bad power or controller cable connection at dome unit.  Bad controller cable connection at controller.	Call King Controls.
STATUS light is steady green but no picture.	Satellite receiver is off or requires reset.  King Dome is factory set for DIRECTV Single Satellite 101 and you have a different service.	Turn receiver on or reset.  Configure the King-Dome for your service (page 13).

The King-Dome Satellite System has been designed to be maintenance and trouble free.

For optimum signal strength, keep the dome clean from dirt, bugs, and other debris. Periodic washing of the dome with mild soap and water is recommended.

**IMPORTANT! Do not power wash the King-Dome.**

If you plan on storing your vehicle for long periods of time, it is recommended that the system be put through a search procedure on a quarterly basis to keep all moving parts in good working order.

If you have any comments or questions, please contact the King Controls Service Department at (952) 922-6889, or email King Controls at [info@kingcontrols.com](mailto:info@kingcontrols.com).

### Rain Fade

Rain or dew on the dome can cause signal interference and make the digital picture freeze, pixel or go out altogether. This loss of signal is commonly referred to as “rain fade” and is caused by the combination of water in the atmosphere and water on the dome surface.

To minimize this issue and eliminate the effects of water on the dome, apply King Controls **Dome Magic**® rain fade solution to the dome. This will prevent water from sticking to the dome surface and blocking the signal. For additional details on **Dome Magic**® rain fade solution please contact an authorized King-Dome dealer or call King Controls at (952) 922-6889.



Single Application Packet #1830-SP



Spray Can #1830

Note: **Dome Magic**® will discolor black domes or domes painted a dark color.

## SECTION 8

# LIMITED WARRANTY

Every new King-Dome Satellite System is thoroughly inspected and tested before leaving the factory, and is covered by the following two year parts and one year labor limited warranty from the date of original purchase:

- Two year parts warranty: The customer is not responsible for the cost of replacement parts if the original part is determined to be defective under the terms of the warranty. The customer is responsible for the cost of replacement parts after two years.
- One year labor warranty: The customer is not responsible for labor costs to repair unit if unit falls under the terms of the warranty. Any warranty labor outside of that performed at the factory is not covered unless the product has been installed by an authorized dealer/installer or OEM manufacturer. The customer is responsible for all labor costs after one year.

Should any trouble develop during the warranty period, contact King Controls. You must contact King Controls before the warranty period expires. The customer must supply proof of purchase (such as a dated sales receipt) when requesting warranty service. If customer cannot supply proof of purchase, warranty period shall start 30 days after date of manufacture.

Only King Controls and certified dealers are authorized to perform warranty evaluations and repairs. Depending upon the problem, King Controls may authorize the dealer to perform the necessary repairs, or may have the unit returned to King Controls for repairs.

A certified dealer must not perform any repair without first contacting King Controls for a Service Order Number. King Controls will advise the dealer on how to proceed with any repairs.

If it is determined that the unit needs to be returned to King Controls, customer must return COMPLETE product, freight prepaid, to: **King Controls, 11200 Hampshire Avenue South, Bloomington, MN 55438-2453.**

If inspection shows the trouble is caused by defective workmanship or material, King Controls will repair (or at its option, replace) without charge.

When returning product, King Controls will supply an RMA number (Return Merchandise Authorization). This number must be clearly written on the box. Failure to clearly write RMA number on box may result in delays in processing claim. Along with product, customer should include in the box: his/her name, address, daytime phone number, proof of purchase and description of the problem.

This warranty does not cover installation and external wiring, or remanufactured units. This warranty is not transferable from the original owner.

Due to the expanding and changing TV market, King Controls cannot be held responsible for changes made to satellite services. Software updates to address such issues are not covered under warranty.

This warranty also does not apply where:

- The product has been abused, misused, improperly installed or improperly maintained.
- Repairs have been made or attempted by others that are not certified by King Controls to do such repairs.
- Repairs are required because of normal wear and tear.
- Alterations have been made to the product.
- The dome cover has been removed without authorization.
- Supplied grease not used in the external coax connections as specified in the instructions (non-portable only).
- Damage has been caused by power washing.
- Circumstances beyond the control of King Controls cause the product to no longer operate correctly.
- Customer is not the original owner.

**In no event shall King Controls be liable for any indirect, incidental, or consequential damages from the sale or use of the product. This disclaimer applies both during and after the term of the warranty.**

**King Controls disclaims liability for any implied warranties, including implied warranties of "merchantability" and "fitness for a specific purpose," after the one year term of this warranty.**

This warranty gives you specific legal rights, and you may also have other rights, which vary from state to state. Some states do not allow the exclusion or limitation of incidental or consequential damages, so the above limitation or exclusion may not apply to you. Some states do not allow limitations on how long an implied warranty lasts, so the above limitation may not apply to you.





11200 Hampshire Avenue South, Bloomington, MN 55438-2453  
Phone: (952) 922-6889 Fax: (952) 922-8424

[www.kingcontrols.com](http://www.kingcontrols.com)